

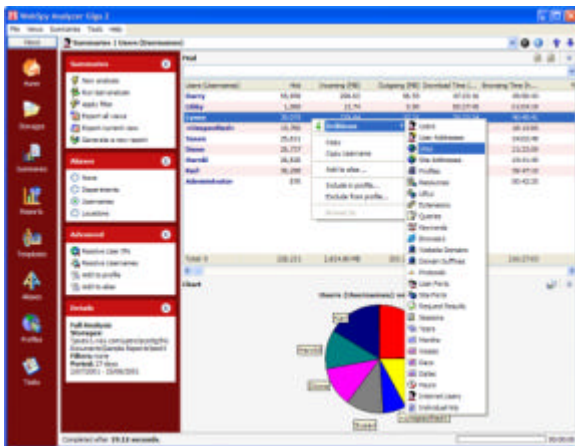
# ContentKeeper Advanced Reporting Module

## Enterprise Internet and Email Monitoring

**ContentKeeper Advanced Reporting Module** provides comprehensive reporting on Internet and email usage for large and small enterprises, with support for **ContentKeeper Web**, **ContentKeeper Mail** as well as most popular firewall and proxy applications in a simple-to-use interface.

There are 3 Advanced Reporting packages to choose from – **Silver**, **Gold** and **Platinum**. These are designed so that your investment is specific to the type (and size) of reporting needs for your organization – so you only invest in the package that fits.

**ContentKeeper Advanced Reporting Module** has been designed to efficiently load and analyze gigabytes of data to a single workstation, providing an enterprise-scale monitoring solution and offering a completely automated reporting function for small and large organizations.



### Preferred hardware requirements

- \* Pentium PIII-500 MHz or faster
- \* Office® 97, 2000 or XP (to run Microsoft® Word reports)
- \* Microsoft® Internet Explorer 6.0 SP1+
- \* Microsoft® MDAC 2.7+ (to use SQL loader).
- \* 15 MB HDD + 10% of log files imported. e.g. 10GB of log files requires 1GB of HDD space



### Key Features

- \* Generates comprehensive reports in a choice of formats: Web (HTML), Word (Doc) and Excel (CSV) and **automatically** delivers these to business unit managers.
- \* Loads and analyzes gigabytes of data.
  - Silver** – 2GB
  - Gold** – 3GB
  - Platinum** - unlimited
- \* Enables in-depth interrogation of **ContentKeeper** log file data.
- \* Analyzes many protocols such as web, email, telnet and FTP usage.
  - Silver** - Web
  - Gold** - Web, Mail, FTP, TelNet
  - Platinum** - Web, Mail, FTP, TelNet
- \* Presents information clearly and concisely using charts.
- \* Includes task scheduling for "set and forget" data analysis.
- \* Features an intuitive user interface with a web-like look and feel.

Powered by



# ContentKeeper Advanced Reporting Module

## Enterprise Internet and Email Monitoring

### Features in Detail

<b>Enterprise-level Capacity</b>	<b>ContentKeeper's Advanced Reporting Module</b> has been engineered with the massive data requirements of enterprisescale organizations in mind. Gigabytes of data can be imported and analyzed using a scalable storage system and enhanced reporting engine. Each package is designed to monitor your organizational reporting needs <i>Silver</i> – 2GB, <i>Gold</i> – 3GB, <i>Platinum</i> - unlimited
<b>Automated</b>	Schedule large data imports and report generation to occur overnight for a true “set and forget” approach to Internet and email traffic analysis. Create and email reports to business unit managers automatically.
<b>Policy Based Reporting</b>	Allows you to accurately monitor and manage compliancy with your Internet and email usage policies.
<b>Template Editor</b>	Create your own report templates based on the unique requirements of your organization.
<b>Flexible Data Importing</b>	Import your log file(s) data straight from <b>ContentKeeper</b> , a text file, SQL database, via FTP or directly from a compressed folder (GZip)
<b>Multi Protocol Support</b>	Each <b>ContentKeeper's Advanced Reporting package</b> offers reports specific to your organizational needs. <i>Silver</i> - Web <i>Gold</i> - Web + Mail + FTP + TelNet <i>Platinum</i> - Web + Mail + FTP + TelNet You can configure additional protocols using the port and protocol drilldowns.
<b>Report Wizard</b>	<b>ContentKeeper's Advanced Reporting Module</b> includes easy to use Report Wizards to help you quickly create comprehensive reports.
<b>Configurable Aliases</b>	Multi-level aliasing enables you to sort data based on logical groups for your organization, such as departments, locations, types of browsing, and Intranet pages.
<b>Simple set up and configuration</b>	<b>ContentKeeper's Advanced Reporting Module</b> provides powerful analysis and reporting tools for enterprise scale organizations and very easy to install and configure. Run the installation, import your log files and you're away!
<b>Free 30 day trial</b>	Try a fully functional version for 30 days with no obligation.

Powered by



## ContentKeeper Advanced Reporting Module

### Internet and Email Monitoring and Reporting

ContentKeeper Advanced Reporting Features Matrix	Standard Reports (free with ContentKeeper)	Advanced Reporting Silver	Advanced Reporting Gold	Advanced Reporting Platinum
<b>Real Time Monitoring</b>	✓			
<b>Customizable categories</b>	✓	✓	✓	✓
<b>Reports on</b> Web Telnet, FTP, NetFlow Email	✓	✓ ✓	✓ ✓ ✓	✓ ✓ ✓
<b>Task Scheduling</b> Back up and off loading reports Automated Email Reports	✓	✓ ✓	✓ ✓	✓ ✓
<b>Reporting</b> Standard Report Wizard Policy Based Reporting Extra Email Templates Template Builder	✓	✓ ✓	✓ ✓ ✓	✓ ✓ ✓ ✓
<b>Summaries</b> Standard Summaries Extra Email Summaries Customizable Analyses	✓	✓	✓ ✓	✓ ✓ ✓
<b>Aliases</b> Standard Aliases Configurable Multi-level Aliases	✓	✓	✓	✓ ✓
<b>Log Loading</b> Text File SQL Server FTP Compressed Files (GZip)		✓	✓ ✓	✓ ✓ ✓ ✓
<b>Log Capacity</b> 2Gb 3Gb Unlimited	✓	✓	✓	✓
<b>Storage Capacity</b> Single Storage Six Storages Unlimited Storages	✓	✓	✓	✓

Powered by



**Download a FREE**

**30-day trial from [www.contentkeeper.com](http://www.contentkeeper.com)**